



Ewald Enterprises, Inc.

Lic. Real Estate Broker • AB2473/AU17340
Auctioneers ♦ Appraisers ♦ Real Estate Professionals

12472 Lake Underhill Rd., Suite 312
Orlando, FL 32828
407.275.6863
www.ewaldauctions.com

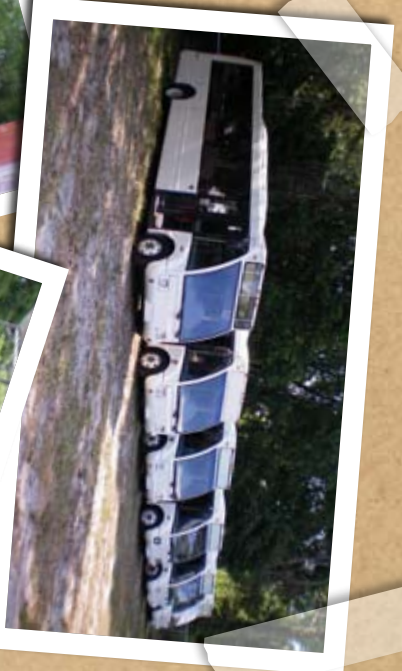
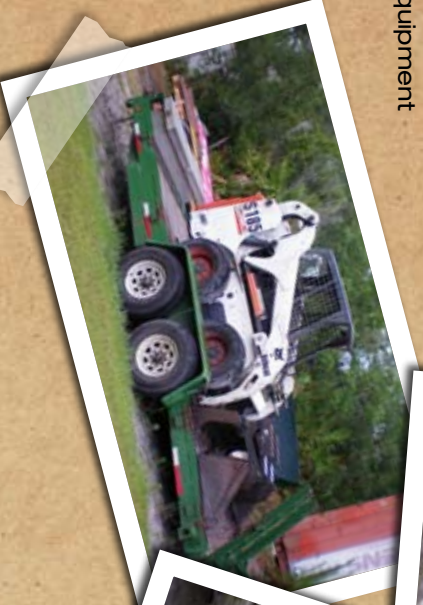
**Bankruptcy & Secured Creditor
AUCTION**
Saturday, June 28 at 10am

- (6) Shuttle Buses
- Refuse Company Equipment
- Bobcat • Forklifts
- (2) Boats • (2) Vans

Location: 88 W. Ponkan Rd. • Apopka, FL 32712

Directions: From the intersection of US 441 (Orange Blossom Trail) and CR 435 (Park Avenue, which becomes Rock Springs Road), go north on CR 435 for 3.8 miles to Ponkan Road. Turn left (west) onto Ponkan for 0.2 miles to auction site. Look for signs!

Can't Make it to the Auction? Register for this event on proxibid.com and bid from the comfort of your home or office.
BID LIVE ONLINE! 877-505-7770
www.proxibid.com



FIRST CLASS MAIL
U S POSTAGE
PAID
ORLANDO FL
PERMIT #260



Ewald Enterprises, Inc.

Lic. Real Estate Broker • AB2473/AU17340
Auctioneers ♦ Appraisers ♦ Real Estate Professionals

**Bankruptcy & Secured Creditor
AUCTION**
Saturday, June 28 at 10am

- (6) Shuttle Buses
- Refuse Company Equipment
- Bobcat • Forklifts
- (2) Boats
- (2) Vans

Auction: June 28, 2008 – 10am

Bankruptcy & Secured Creditor
AUCTION
 Saturday, June 28 at 10am

BUSES

Six (6) North American Bus Industries (NABI)

- Shuttle Buses
- Model: Optare 30LFN
- 20 Passenger
- All have Thermo King A/C units
- All showing between 320,054 to 392,483 miles
- Interiors feature cloth seating and luggage rack storage



NABI - 20 Passenger Shuttle Bus

Pursuant to orders in the U.S. Bankruptcy Court, Middle District of Florida, Orlando Division, in various cases and the secured creditors, Ewald Enterprises has been authorized to sell the following vehicles at public auction to the HIGHEST BIDDER REGARDLESS OF PRICE!



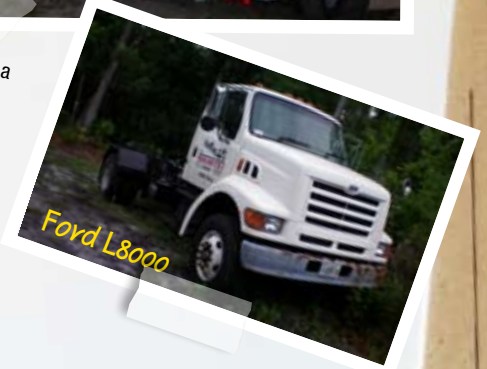
Pathfinder 2000V

BOATS

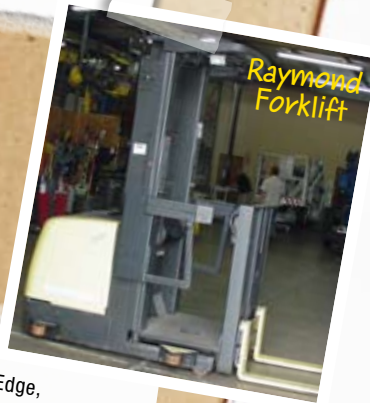
- 2005 Pathfinder 2000V Center Console with Yamaha 150 Four Stroke Outboard on EZ Loader Aluminum Trailer with Trim Tabs, Live Well, Lowrance GPS and On-board Battery Charger
- 1998 Bayliner Capri LS 2050 Bowrider Boat with Mercruiser Inboard Engine and trailer

VEHICLES

- 1998 Ford L8000 Truck - 166,732 miles with 20,000 hoist
- 2001 Chevy Express 3500 Van - V8, Auto, A/C, 92,142 miles, with carpet cleaning equipment
- 1995 Chevy C20 Van - V8, Auto, A/C (not working), 158,570 miles



Ford L8000



Raymond Forklift



Bobcat S185

EQUIPMENT

- 2003 Bobcat Skid Steer S185 with DL x 68 in LP Cutting Edge, 1991 66' Grapple
- Caterpillar F35 Forklift - 3 stage electric, 3500 lb capacity, needs new battery
- Raymond "Gofer" Standing Forklift, Model 233-OPC22T, 24V with Ranger II Charger
- Hyster Electric Lift Truck, Model W45XT
- (31) 16 Yard Refuse Roll-off Dumpsters
- (1) 10 Yard Refuse Roll-off Dumpsters
- 2002 Anderson Dual Axle 14,000 lb cap. trailer
- 1999 CATL Dual Axle 7,000 lb cap. trailer

Can't Make it to the Auction?
BID LIVE ONLINE!

Register for this event on proxibid.com and bid from the comfort of your home or office.

proxibid
 877-505-7770
 www.proxibid.com

EE
 Ewald Enterprises, Inc.

12472 Lake Underhill Rd., Suite 312
 Orlando, Florida 32828
 407.275.6853
 www.ewaldauctions.com

Terms & Conditions

- Everything sells to the HIGHEST BIDDER REGARDLESS OF PRICE!
- 10% Buyer's Premium charged on all sales
- Everything sells on an "as is/where is" basis
- Payment in full day of auction
- Payment in cash, cashier's check, or check with bank letter of guarantee
- \$500 cash deposit per vehicle at time of bidding
- Removal day of auction or by appointment
- Inspection (one) 1 hour prior to action
- Auction conducted on site, rain or shine

Owners: Colonial Bank, N.A.
 Leigh R. Meininger, Trustee
 Servpro of Orlando NW, Case No. 6:08-bk-02907-ABB
 Emersen Noble, Trustee
 Enwright, Case No. 6:08-bk-03789-ABB
 Rathman, Case No. 6:08-bk-05574-KSJ
 Spectral Management

Announcements made at the auction take precedence over printed matter.