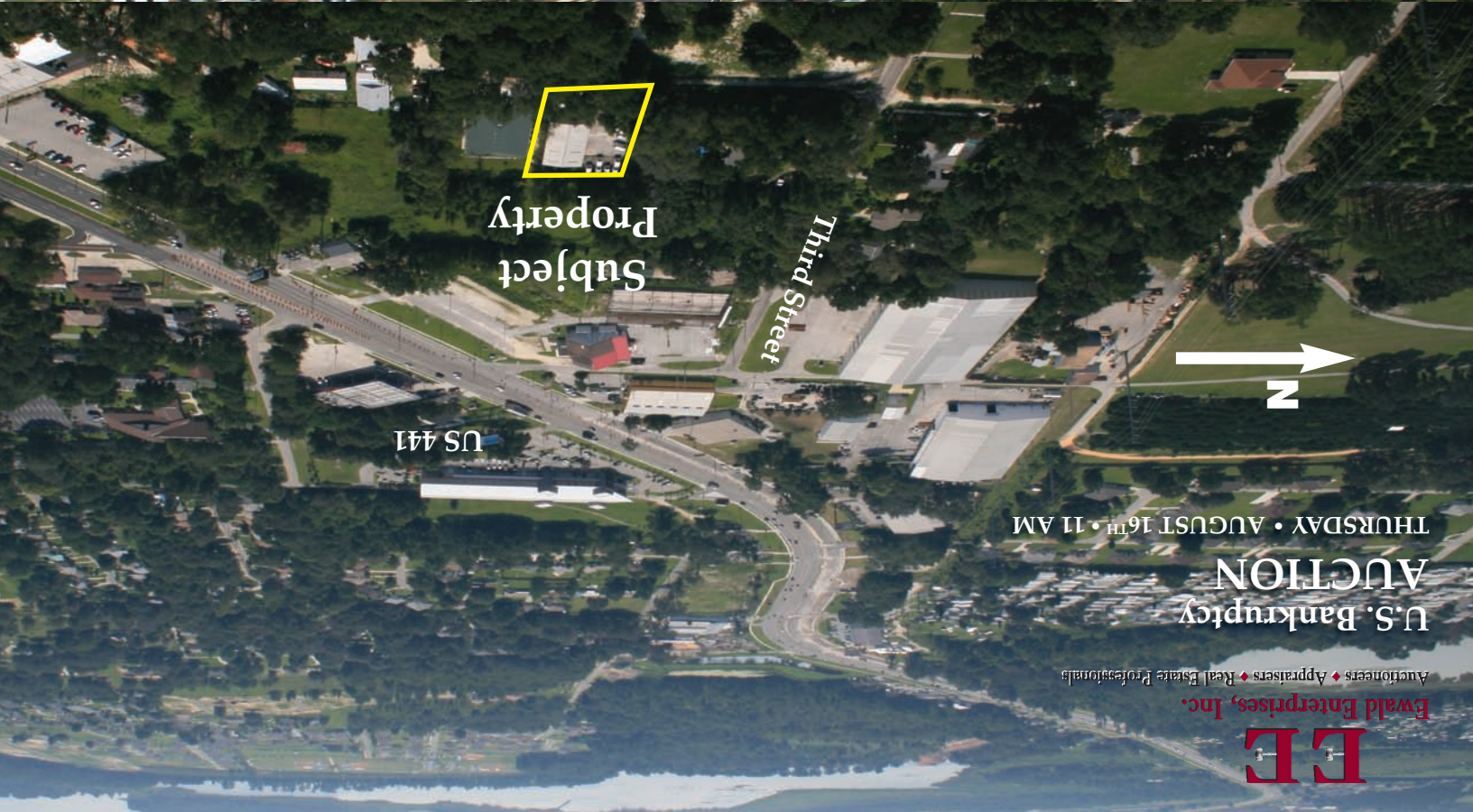




Subject Property

Owners:

Leigh R. Meininger, Trustee. Boyd, R & T, Case No. 6:07-bk-01153KSJ
 Scott R. Fransen, Trustee. True Temp, Inc., Case No. 6:07-bk-01152KSJ
 Robert E. Thomas, Trustee. McCarta, R & L, Case No. 6:07-bk-02703-ABB
 5th 3rd Bank c/o Atlantic Windows and Door, Inc.



Subject Property

THURSDAY • AUGUST 16TH • 11 AM

U.S. Bankruptcy AUCTION

Auctioneers ♦ Appraisers ♦ Real Estate Professionals
Ewald Enterprises, Inc.



Ewald Enterprises, Inc.

LLC, Real Estate Broker • AB024730011940

Auctioneers ♦ Appraisers ♦ Real Estate Professionals

12472 Lake Underhill Road, Suite 312

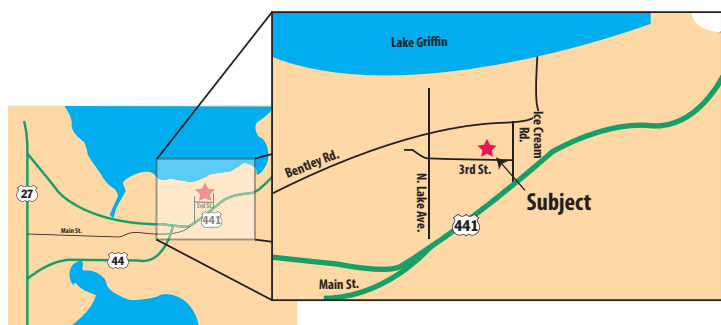
Orlando, Florida 32828

(407) 275-6853

www.ewald-enterprises.com

U.S. Bankruptcy AUCTION

THURSDAY • AUGUST 16TH • 11 AM



Location: 1585 Third Street • Leesburg, FL 34748-7070

Directions: From the intersection of US 27 & US 441, go east for 2.1 miles to Ice Cream Road, then north for 0.1 mile to Third Street. Go west on Third Street to site. Look for Signs.

Pursuant to orders in various bankruptcy estates and secured creditors, Ewald Enterprises has been authorized to sell the following real and personal property at public auction.

Commercial Property:

- 20,000 square foot lot
- Zoned C-2; Community Commercial
- Future Land Use: County Urban
- Well & Septic
- Fenced with Automatic Gate

Building Features:

- 4000 square foot building
- Built in 1988
- Offices and warehouse with insulated ceiling & skylights
- 3 bathrooms
- 3 overhead roll-up door (2 @ 10'; 1 @ 7')
- Parts cage



Vehicles:

- 2001 International 4700 DT466E box truck, auto, ramp (150,516 miles)
- 2000 International 4700 T444E box truck, auto, lift gate (142,147 miles)
- (2) 2001 Dodge Ram 3500 vans, am/fm/cass, a/c, auto, (118,071 & 136,344 miles)
- 2001 GMC 3500 Savana van, am/fm, a/c, auto, (138268 miles)
- (2) 2000 Ford E250 vans • (3) 1999 Ford E250 vans
- (3) 1998 Ford E250 vans • 1996 Ford E250 vans
- 1994 Ford E250 van • 1993 Ford E250 van
- 1997 Ford F150 XLT Ext Cab Pick-up, (206,408 miles)
- 2005 Continental Cargo Enclosed utility trailer

Glass Manufacturing, Fabricating & Handling Equipment:

Complete Glass Lamination System Including:

- 2 part urethane laminating pump
- Ultraviolet curing oven
- Polylam urethane kits and components
- Pneumatic screen table
- Roller table and stands

Air Conditioning Contractor Equipment & Inventory:

- Rheem RXRF-FBA1 fresh air damper
- (6) Promax RG5410hp refrigeration recovery units
- (13) oxy-acetylene portable torches and assorted canisters
- (8) Fast Vac deep vacuum pumps

Inventory:

- Contents of A/C parts room: condenser; fans; capacitors; circuit boards; fuses; brass fittings; switches; sequensors; shop vac • Connections and louvers • Bathroom exhaust fans • A/C vents • Filters • Copper tubing • Air registers
- Aluminum and insulated flexible duct work • And More

Equipment:

- Hyster 30 forklift 3 stage, propane, SS, 2729 hours
- Genie Superlift SLC-24
- Vemette 512 Lift
- Cambell Hausfield 7.5 h.p. compressor
- Porter cable 7.5 h.p. compressor
- (8) aluminum 24' extension ladders
- Fiberglass 20' extension ladder
- (18) fiberglass 6' step ladders
- (12) fiberglass 8' step ladders
- (3) Remington power fastener guns
- (2) mitre saws
- (3) hand trucks
- Shop fan
- Job box
- Johnson bar
- Pallet racking
- Metal & plastic storage shelves
- (8) sting wet dry vacs
- Shop lights
- And More

Miscellaneous

- Manitowoc S-570 ice machine
- (2) Dixie Narco soft drink vending machines
- Ewave refrigerator • Sharp microwave oven
- High top table and 5 chairs

Office Furniture & Equipment

- Merlin Legend phone system & 6 phones
- Network server & accessories
- (4) computer systems
- (2) Muratec MFX2830 copiers
- 19" Ikegam TV
- Triplex 4-channel digital video recorder
- HP laserjet 2100 printer
- Milolta QMS magicolor 2200 color laser printer
- HP laserjet 5 printer
- (16) file cabinets (lateral & other)
- 2 drafting tables
- executive desk & credenza
- (7) work stations
- Cobalt Ice drop safe
- (15) office chairs
- PTIM-3500 time clock

Terms and Conditions:

- All property sells on an "as is, where is" basis.
- 10% buyer's premium charged on all sales.

Real Estate:

- \$10,000 cash or cashier's check must be displayed to bid.
- 10% deposit collected day of auction.
- Balance due at closing within 30 days of auction.
- All taxes, current and delinquent, to be paid by buyer.
- Possession with deed.
- Sale subject to U.S. Bankruptcy Court approval.
- Bidder Information Package available upon request.
- Inspection by appointment only, call Auctioneer.

Personal Property:

- Everything sells to the highest bidder regardless of price.
- Payment in full, day of auction.
- Payments in cash, cashier's check or check with bank letter of guarantee.
- \$500 cash deposit per vehicle at time of bidding.
- Removal day of auction by 4 pm, or Friday, by appointment only.
- Inspection one (1) hour prior to auction